

SERVICES PENETRATION LEGEND - NOTE: ALL SERVICES PENETRATIONS TO BE COORDINATED WITH CONTRACTOR SHOP DRAWINGS

CODE	TYPE OF PENO	CLEAR OPENING DIMS (mm)	CODE	TYPE OF PENO	CLEAR OPENING DIMENSIONS (mm)
SVP-001	HYDRAULIC	900 x 750	SVP-515	MECH.	250 DIA.
SVP-002	MECH.	900 x 750			
SVP-003	MECH. S.P.	1100 x 1100			
SVP-004	HYDRAULIC	550 x 550			
SVP-005	MECH. TOILET EXH.	550 x 550			
SVP-006	MECH.	900 x 1100			
SVP-007	MECH. SUPPLY	1600 x 770			
SVP-008	MECH. S.P.	1100 x 650			
SVP-009	ELEC. / COMMS	200 x 600			
SVP-010					
SVP-011	FIRE SERVICES				
SVP-012	MECH.	800 x 850			
SVP-013	MECH.	1050 x 905			
SVP-014	MECH.	900 x 600			

CONCRETE BUND SCHEDULE (CB)

CODE	HEIGHT	WIDTH
CB-A	270	170
CB-B	190	190
CB-C	175	900
CB-D	300	200
CB-E	REF. FACADE DETS	
CB-F	REF. FACADE DETS	
CB-G	150	200
CB-H	270	250
CB-J	270	600
CB-K	280	125
CB-L	340	190
CB-M	190	150

STRUCTURAL NOTES - SPECIFIC

- ST.1 FACE OF COLUMN TO ALIGN TO GRID LINE. PROVIDE 5mm NOM. SAW CUTS TO BE PROVIDED IN HEARING LOOP ZONES FOR INSET OF WIRE BELOW FINISH FLOOR.
- ST.2 REFER TO AR4000 SERIES FOR CORE / SERVICES PENETRATION SETOUTS.
- ST.3 REF. SETOUT - DENOTES EDGE OF SLAB / CAPPING BEAM ABOVE PILES - REFER TO STR. DRAWINGS FOR DETAILS. DENOTES EXTENT OF CAST-IN PLACE ARCHITECTURAL PRECAST PANELS TO EDGE OF SLAB/BEAM.
- ST.4 CONCRETE FLOOR FINISHES - REFER ALSO TO AR1000 SERIES.
- ST.5 PROVIDE LOCALISED BUND TO COL. - REF. TO STR. ENGINEERS DRAWINGS FOR DETAILS. TOP OF BUND AT RL 64.670.

THIS DRAWING IS AN UNCONTROLLED COPY UNLESS STAMPED OTHERWISE

CONTRACTORS SHALL VERIFY JOB DIMENSIONS BEFORE ANY JOB COMMENCES. ALL SHOP DRAWINGS SHALL BE SUBMITTED TO THE SUPERINTENDENT AND MANUFACTURERS SHALL NOT COMMENCE WORK UNTIL THE SUPERINTENDENT HAS REVIEWED AND APPROVED THE DRAWING. DIMENSIONS SHALL TAKE PRECEDENCE OVER SCALES. THIS DRAWING SHALL BE THE FINAL COPY. REVISED CONTRACT, SPECIFICATIONS AND DRAWINGS COPYRIGHT OF THIS DRAWING IS VESTED IN NADAAA.

GENERAL NOTES

- RFB = RECESSED FLOOR BOX - SIZE AND DEPTH BY ELECTRICAL ENGINEER
- CB = CONCRETE BUND - REFER TO SCHEDULE
- SVP = SERVICES PENETRATION - REFER TO SCHEDULE
- SVT = SERVICES TRENCH TO ENG. SPEC WITH PLATE STEEL REMOVABLE COVER
- CR = REBATE INTO CONCRETE SLAB EDGE - REFER TO SCHEDULE ON ARCHD
- DP = DOWNPIPE PENETRATION THRU CONCRETE SLAB
- RWO/P/W = FLOOR WASTE PENETRATION THRU CONCRETE SLAB
- TD = TUNDRISH - GREATER THAN 100mm x 100mm (REFER HYDRAULIC ENG. SCHEDULE ON ARCHD)
- SO = SEALED GULLY TRAP - ED. GREATER THAN 100mm x 100mm (REFER HYDRAULIC ENGINEER)
- S/O = SIPHONIC OUTLET
- OF = OVERFLOW OUTLET
- PRST = ARCH. PRECAST PLACED IN-SITU. INTEGRAL TO STRUCTURAL POUR
- CIC = CAST-IN CONDUIT LOCATION - REFER TO SERVICES DRAWINGS
- INDICATES REBATE REFL. EQUIPMENT TO BE MOUNTED ON CL. OF COL. EXCEPT WHERE MULTIPLE DEVICES INDICATED
- STEP IN CONCRETE. X = DEPTH
- CONCRETE FLOOR FINISHES - REFER ALSO TO AR1000 SERIES
- STRUCTURAL NOTE
- POWER NODE - SIZE AND DEPTH BY ELECTRICAL ENGINEER
- INDICATES A SETOUT POINT
- INSITU CONCRETE
- EXISTING (HERITAGE FACADE)
- PRECAST CONCRETE
- EXTENT OF 'CF-01' - REFER TO AR1000 SERIES
- REVISION TAG
- DETAIL NUMBER
- DETAIL CALLOUT
- NOM. RFB SIZES: RFB-01 - REFER SERVICES DRAWINGS RFB-02 - REFER SERVICES DRAWINGS

GENERAL NOTES

- SET OUT DIMENSIONS TO SERVICES, PENETRATIONS / TRENCHES ARE NOMINAL AND TO BE COORDINATED AND IN CONJUNCTION WITH CONTRACTOR SHOP DRAWINGS.
- ANY PENETRATIONS SIZED UNDER 150mm DIAMETER ARE NOT INCLUDED IN THIS DRAWING. PLEASE REFER TO SERVICES DRAWINGS.
- SET OUT DIMENSIONS TO PENETRATIONS AT 150mm DIA OR GREATER AND FLOOR BOXES ARE TO CENTRELINE.
- UNDO OFF-FORM CONCRETE TO BE CLASS 20 - REFER TO AR1000S, AR1200S, AR200S AND MATERIAL SCHEDULE.
- SET OUT DIMENSIONS TO COLUMNS ARE GENERALLY TO CENTRELINE UNLESS OTHERWISE NOTED.
- REFER TO STRUCTURAL ENGINEER'S DRAWINGS FOR CAST IN PLATE RECS.
- STEEL COLUMN CONNECTIONS @ BRINDING MAY REQUIRE LOCAL ENLARGEMENTS - REFER TO STRUCTURAL ENGINEER'S DRAWINGS.
- ALL SERVICES PENETRATIONS THROUGH FIRE RATED ELEMENTS TO BE PROTECTED IN ACCORDANCE WITH SICA.
- PRECAST REBATE POCKETS TO SLABS NOT SHOWN - TO BE COORDINATED WITH PRECAST MANUFACTURER. LOCATIONS TO BE SET IN ACCORDANCE WITH STRUCTURAL ENGINEER'S RECS AND OFFSET AS REQUIRED FROM FACE REBATES TO SLAB EDGE.
- REFER TO SERVICES ENGINEER'S DRAWINGS FOR FLOOR BOX SIZES AND SPECIFICATIONS.
- NOTE SOME FLOOR BOX LOCATIONS SET IN COMPOSITE CLT/INSITU SLABS.
- ALL SERVICES PENETRATIONS TO BE COORDINATED WITH CONTRACTOR SHOP DRAWINGS

INTERNAL / ENCLOSED CONDITIONS

- REFER TO AR1000 SERIES FOR LOCATION AND EXTENT OF EXPOSED CONCRETE FLOORS
- COORDINATE LOCATION OF REQUIRED HOBS FOR EQUIPMENT FIXINGS. ENSURE LOCATIONS ARE CLEARLY IDENTIFIED FOR INSTALLATION OF EQUIPMENT. CONFIRM WITH MANUFACTURER FOR FIXING DETAILS.

EXTERNAL CONDITIONS

- COORDINATE LOCATION OF REQUIRED HOBS & PLINTHS FOR EQUIPMENT FIXINGS. ENSURE LOCATIONS ARE CLEARLY IDENTIFIED FOR INSTALLATION OF EQUIPMENT. CONFIRM WITH MANUFACTURER FOR FIXING DETAILS.

Rev	Issue	Revision Description	And	Date
E	SG	COL / SETOUT REV. TO SUIT STR.	-	24.10.13
D	SG	SIPHONIC DRAIN SETOUTS REV. TO SUIT	-	23.10.13
C	SG	SV. PENOS REV. TO SUIT	-	21.10.13
B	SG	SLAB PROFILE REV. TO SUIT	-	11.10.13
A	SG	ISSUED FOR CONSTRUCTION	-	12.08.13
09	SG	VALUE MANAGEMENT ISSUE	-	28.03.13
08	SG	TENDER ADDENDUM 3	-	02.10.12
07	SG	100% CD - TENDER ISSUE	-	07.09.12
06	SG	90% CD ISSUE	-	10.08.12
05	SG	75% CD ISSUE	-	13.07.12
04	SG	50% CD ISSUE	-	01.06.12
03	SG	25% CD ISSUE	-	20.04.12
02	SG	FINAL DO ISSUE	-	24.02.12
01	SG	DO UPDATE	-	20.01.12
*	SG	PREVIOUSLY AR4006	-	
	SG	PRELIMINARY DD	-	02.11.11
	SG	PRELIMINARY DD	-	07.10.11

Rev	Issue	Revision Description	And	Date
E	SG	COL / SETOUT REV. TO SUIT STR.	-	24.10.13
D	SG	SIPHONIC DRAIN SETOUTS REV. TO SUIT	-	23.10.13
C	SG	SV. PENOS REV. TO SUIT	-	21.10.13
B	SG	SLAB PROFILE REV. TO SUIT	-	11.10.13
A	SG	ISSUED FOR CONSTRUCTION	-	12.08.13
09	SG	VALUE MANAGEMENT ISSUE	-	28.03.13
08	SG	TENDER ADDENDUM 3	-	02.10.12
07	SG	100% CD - TENDER ISSUE	-	07.09.12
06	SG	90% CD ISSUE	-	10.08.12
05	SG	75% CD ISSUE	-	13.07.12
04	SG	50% CD ISSUE	-	01.06.12
03	SG	25% CD ISSUE	-	20.04.12
02	SG	FINAL DO ISSUE	-	24.02.12
01	SG	DO UPDATE	-	20.01.12
*	SG	PREVIOUSLY AR4006	-	
	SG	PRELIMINARY DD	-	02.11.11
	SG	PRELIMINARY DD	-	07.10.11

**Brookfield MULTIPLEX**

**NADAAA**

NADAAA  
1920 Washington  
Street No.2  
Boston  
Massachusetts  
02118 USA

Telephone  
+1 817 442 8232  
Facsimile  
+1 888 442 1417  
Email  
nadaaa@nadaaa.com

**John Wardle Architects**

25 Rokeby Street, Collingwood, Victoria 3066 Australia  
Tel : +61 3 8662 0400 www.johnwardlearchitects.com  
© 2012 John Wardle Architects ABN 83 006 814 268

Client: University of Melbourne  
Parkville Campus

Project: Faculty of Architecture  
Building and Planning

Title: CONCRETE PROFILE  
LEVEL 05 FLOOR PLAN

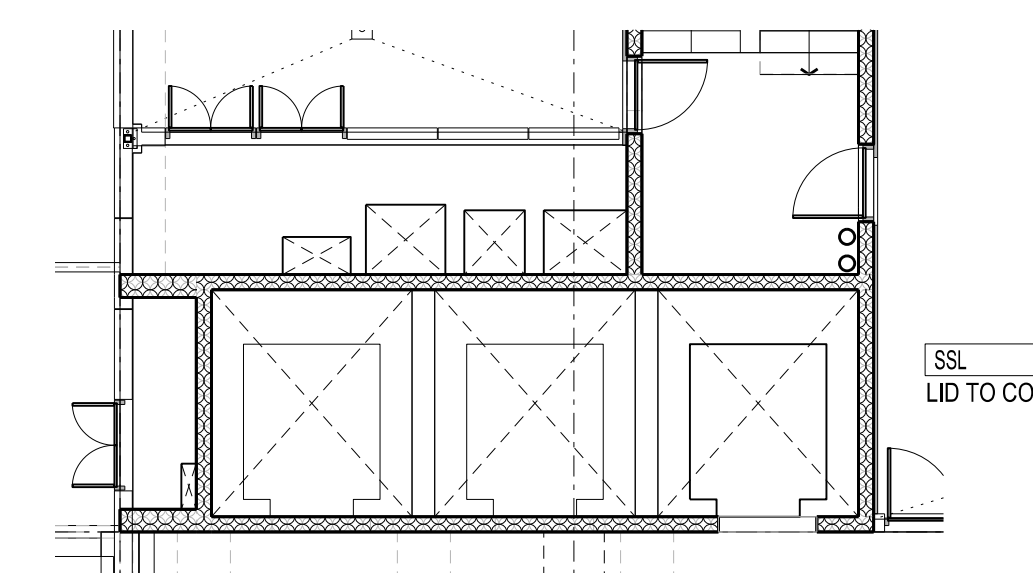
Project No. 0913 Scale: 1:100 @ A0  
1:200 @ A2

Drawing No. AR4007 Revision E

Date: Sept 2011 Drawn - Co-Ord - Check -

FILENAME - SFILES

**FOR CONSTRUCTION**



02 CORE 1 CAPPING PLAN  
SCALE 1:100

01 L05 CONCRETE PROFILE  
SCALE 1:100